

# Piñares

MALL COMERCIAL



## Locales comerciales ideales para tu negocio en Rionegro

Hacen parte de la unidad de apartamentos Pinares, ubicados en la Vía El Tranvía, a tan solo 2,4 km de La Variante y a 3 km del Centro Comercial San Nicolás, con una ubicación privilegiada y estratégica para tu negocios.



## ÁREAS CONSTRUIDAS

**17,25 m<sup>2</sup>** hasta **39,78 m<sup>2</sup>**

## FORMA DE PAGO

INICIAL **50%**

FINANCIADO **50%**

**14**  
Locales



**Construcción  
tradicional**



**Acceso a parqueaderos**  
para visitantes

**Excelente ubicación** en la  
**fachada frontal** de este  
proyecto conformado por  
232 apartamentos

**Gran visibilidad**

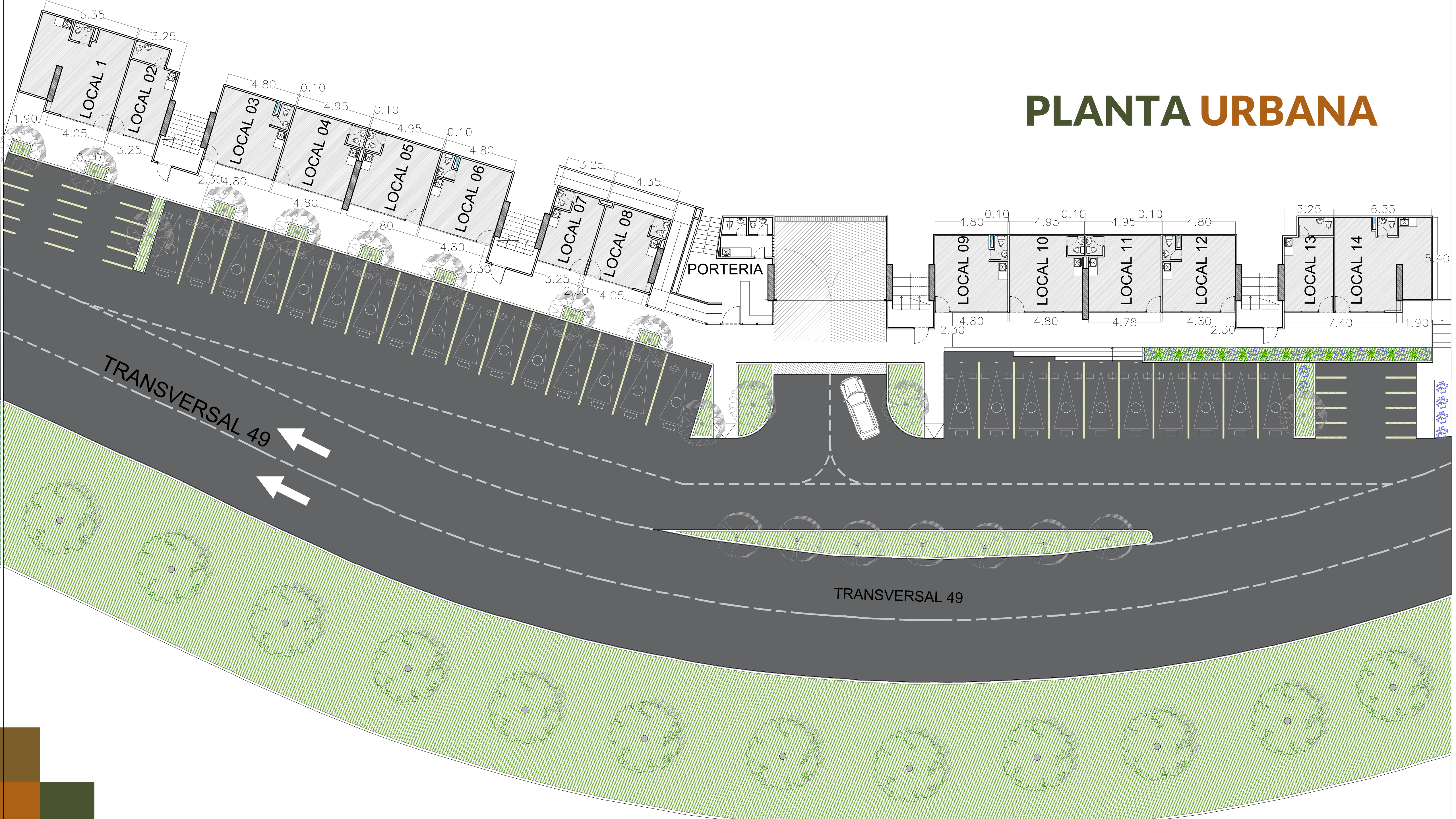


Cuota de separación

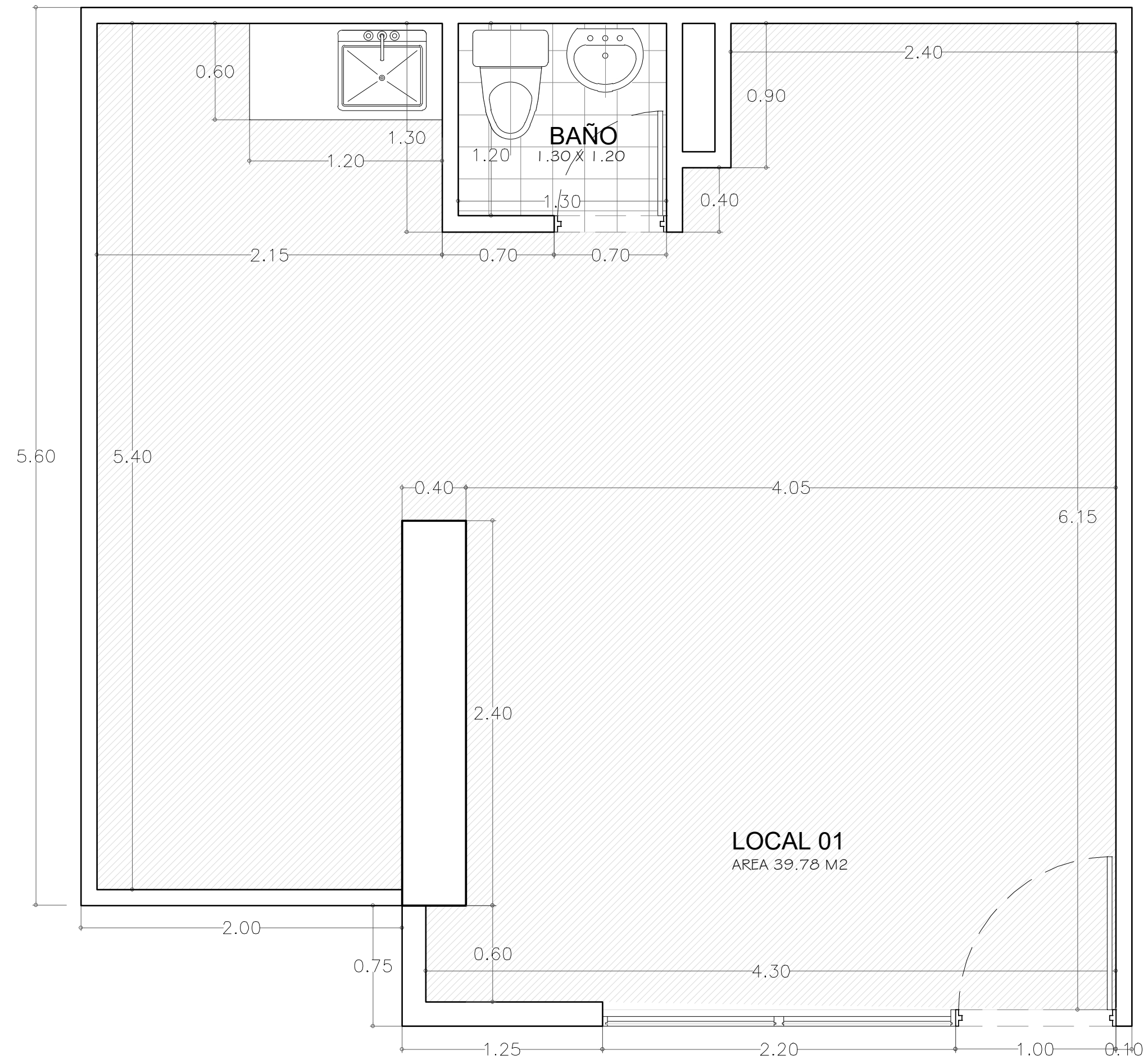
**\$10.000.000**



# PLANTA URBANA



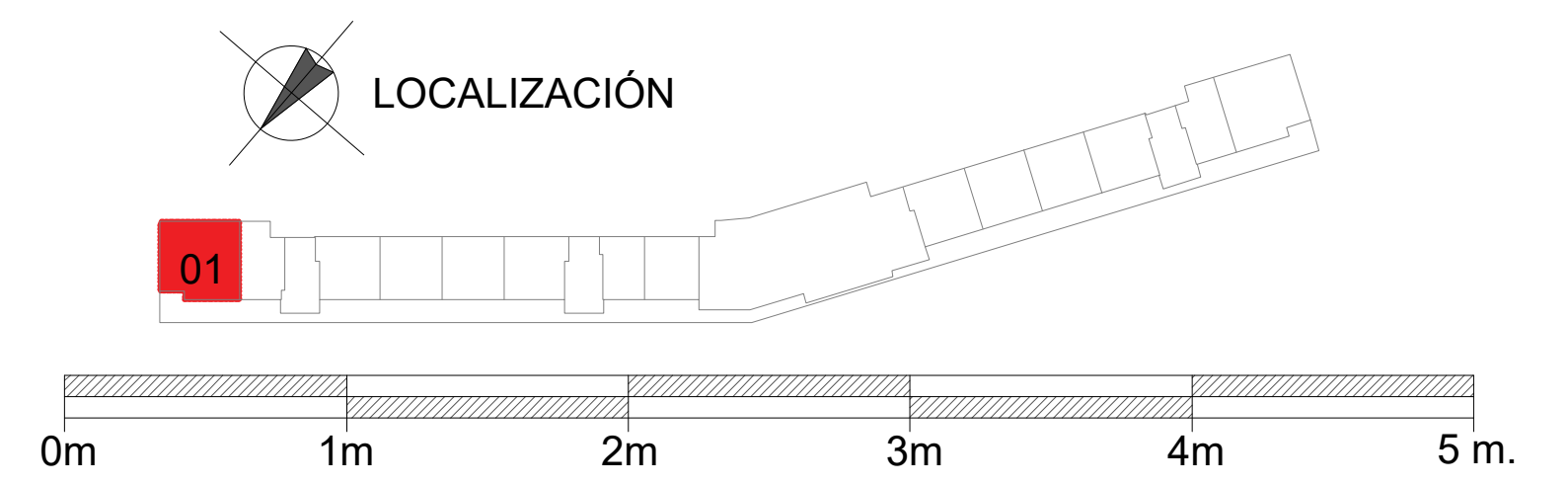
# LOCAL 1



ÁREAS CONSTRUIDAS

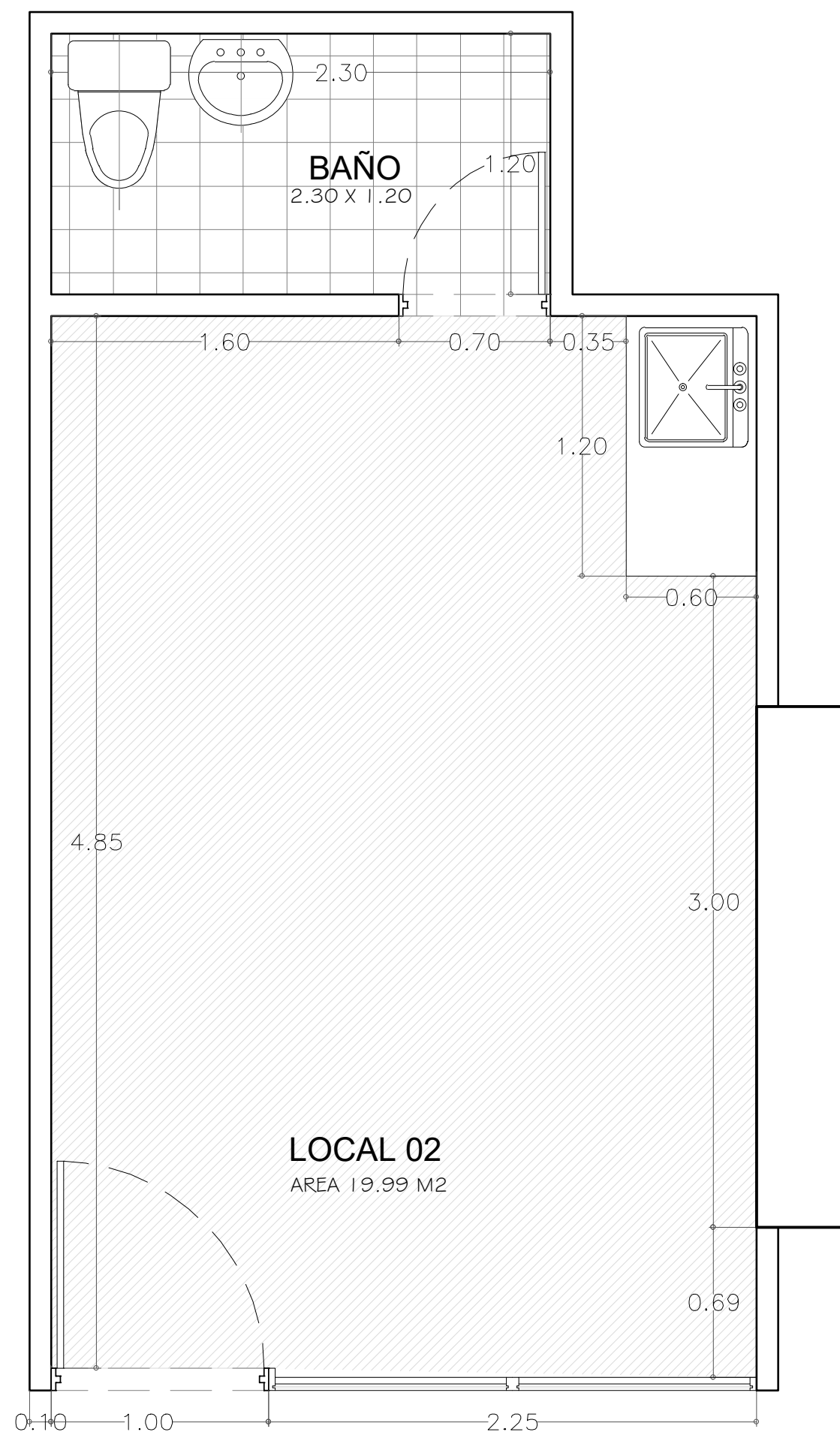
**\*39,78 m<sup>2</sup>**

Área privada: 37,70 m<sup>2</sup>





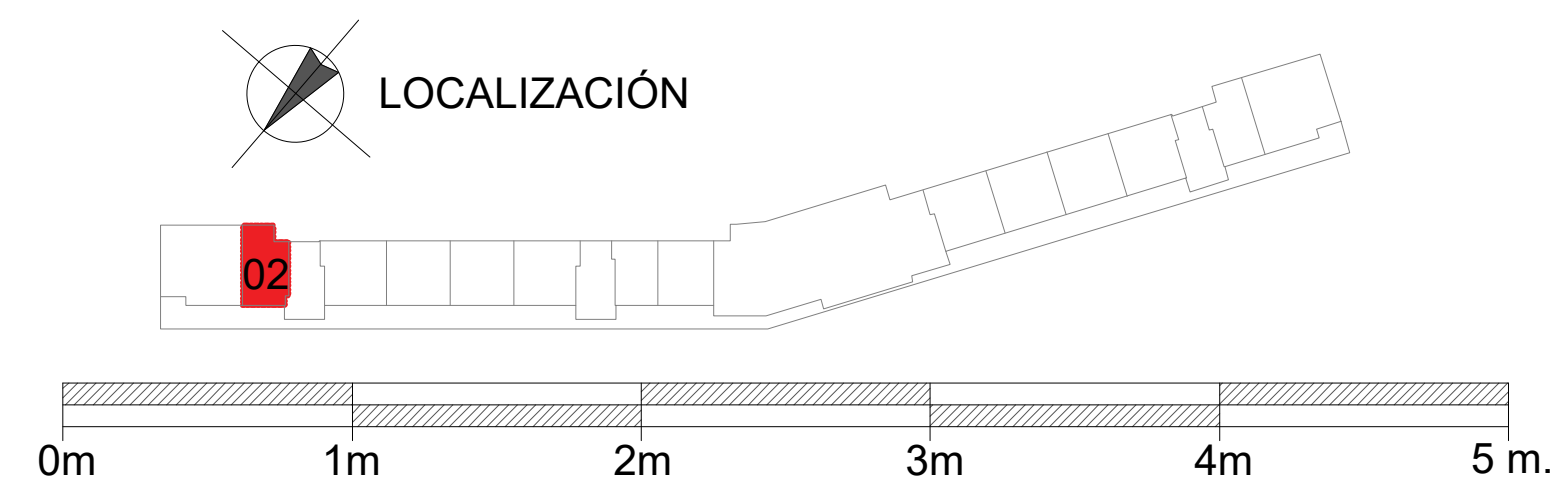
# LOCAL 2



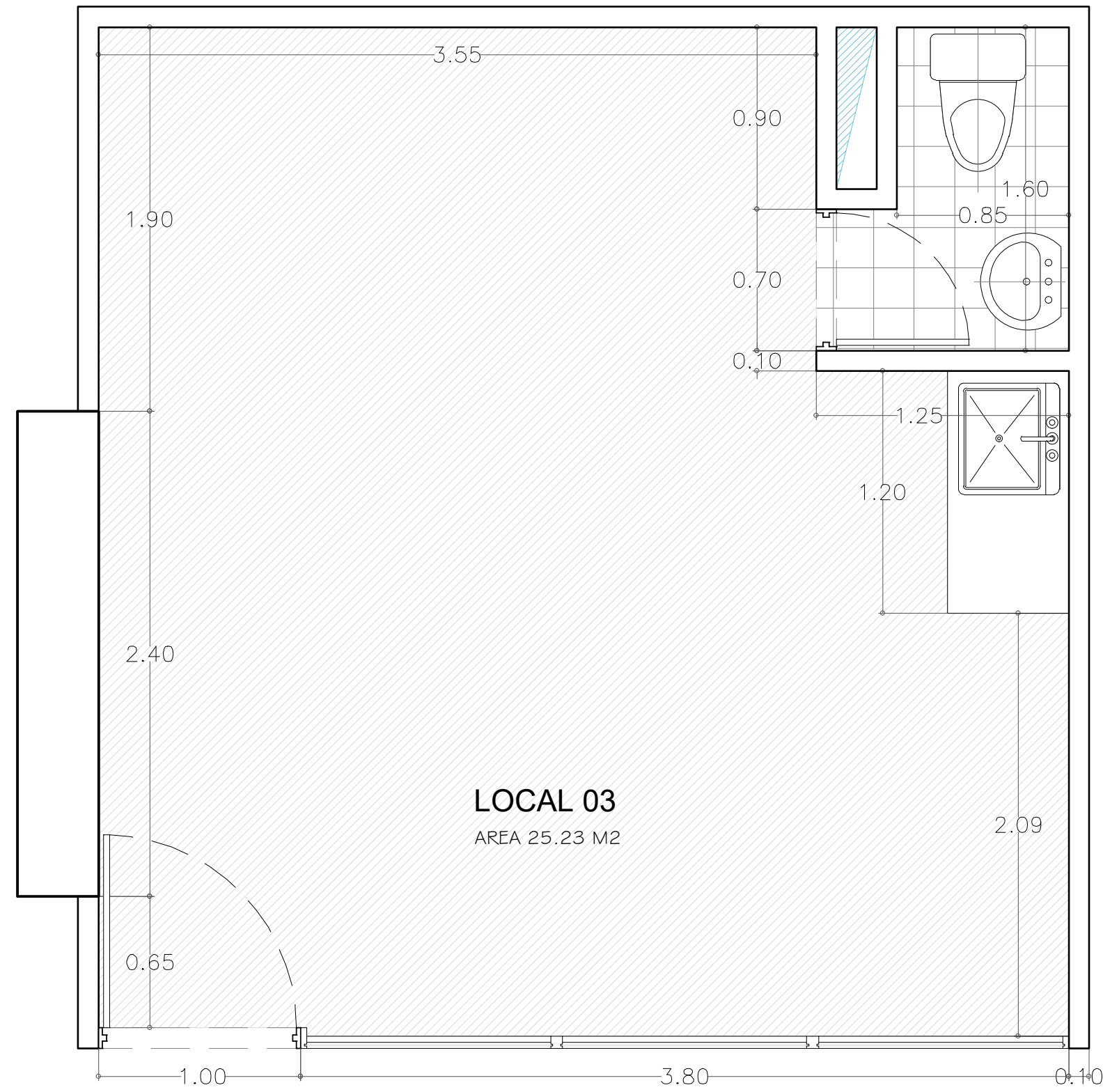
ÁREAS CONSTRUIDAS

**\*19,99 m<sup>2</sup>**

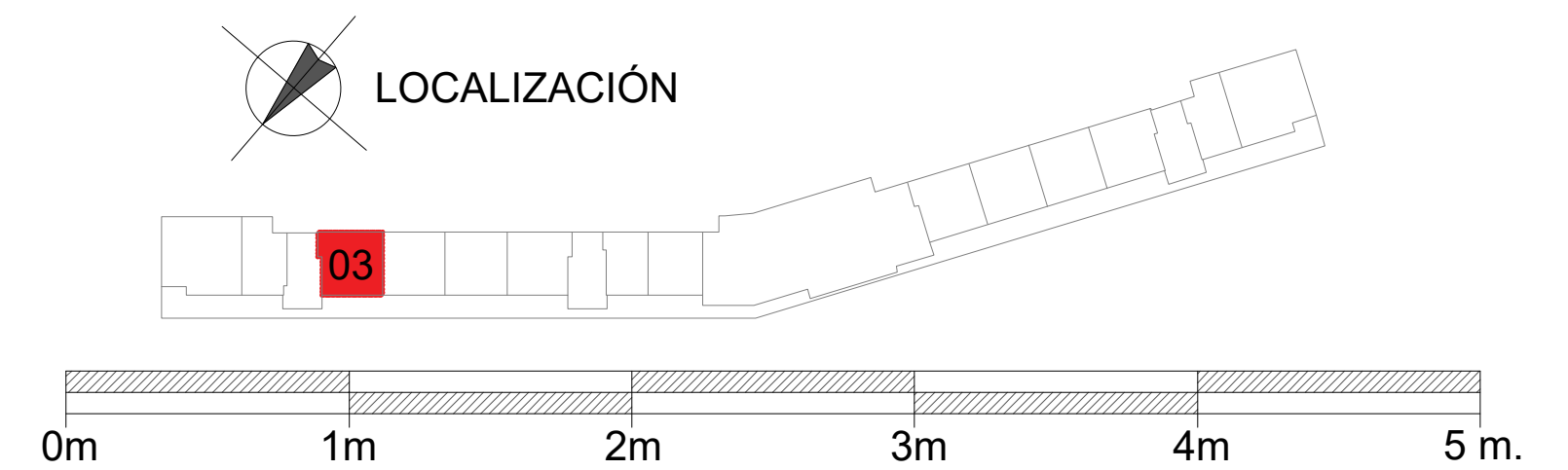
Área privada: 19,58 m<sup>2</sup>



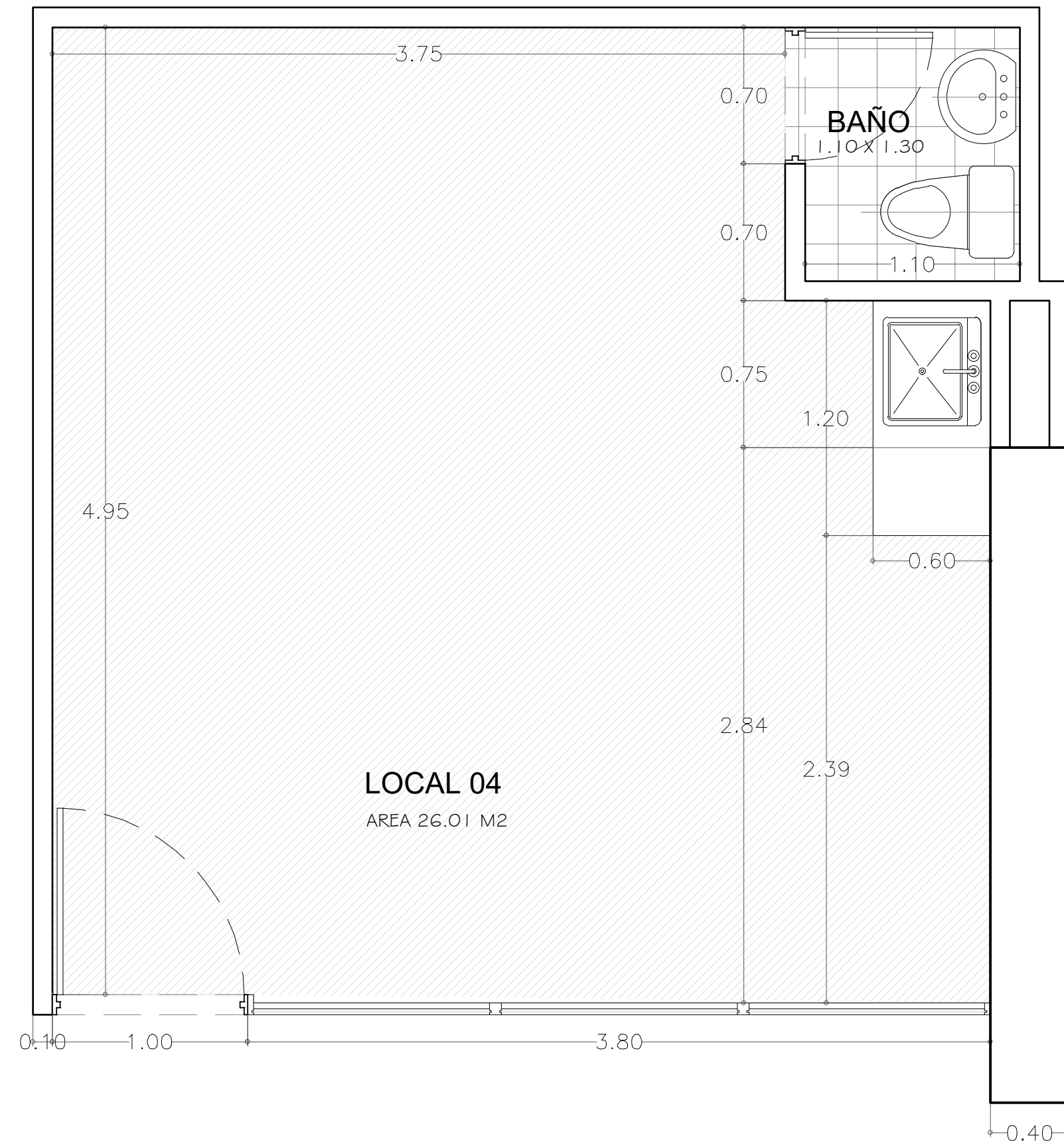
# LOCAL 3



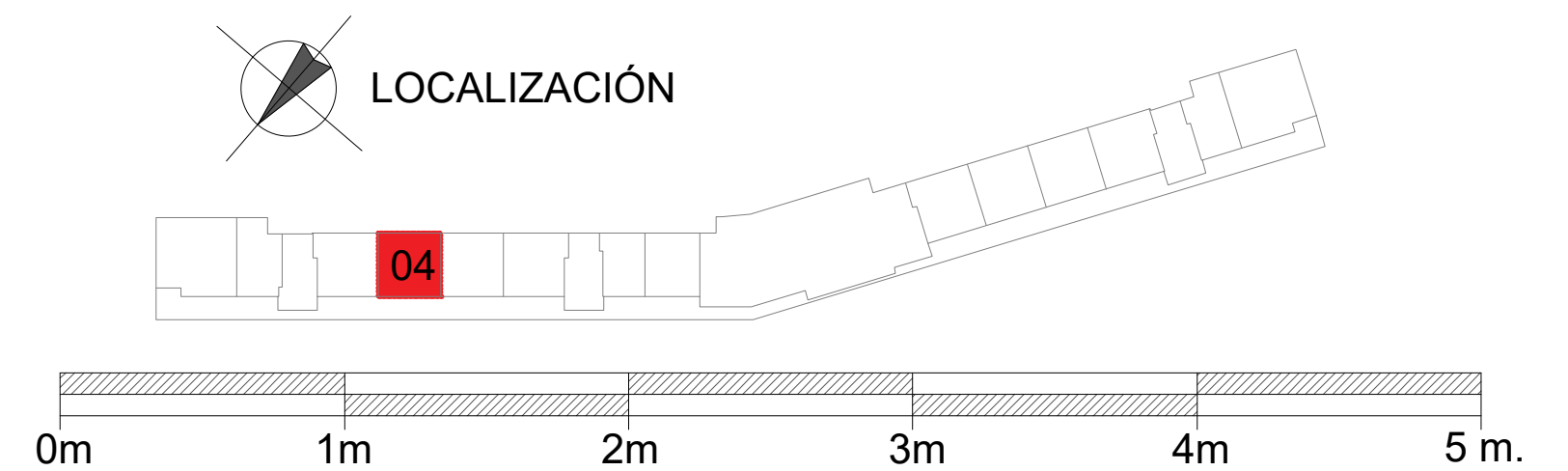
ÁREAS CONSTRUIDAS  
**\*25,23 m<sup>2</sup>**  
Área privada: 24,46 m<sup>2</sup>



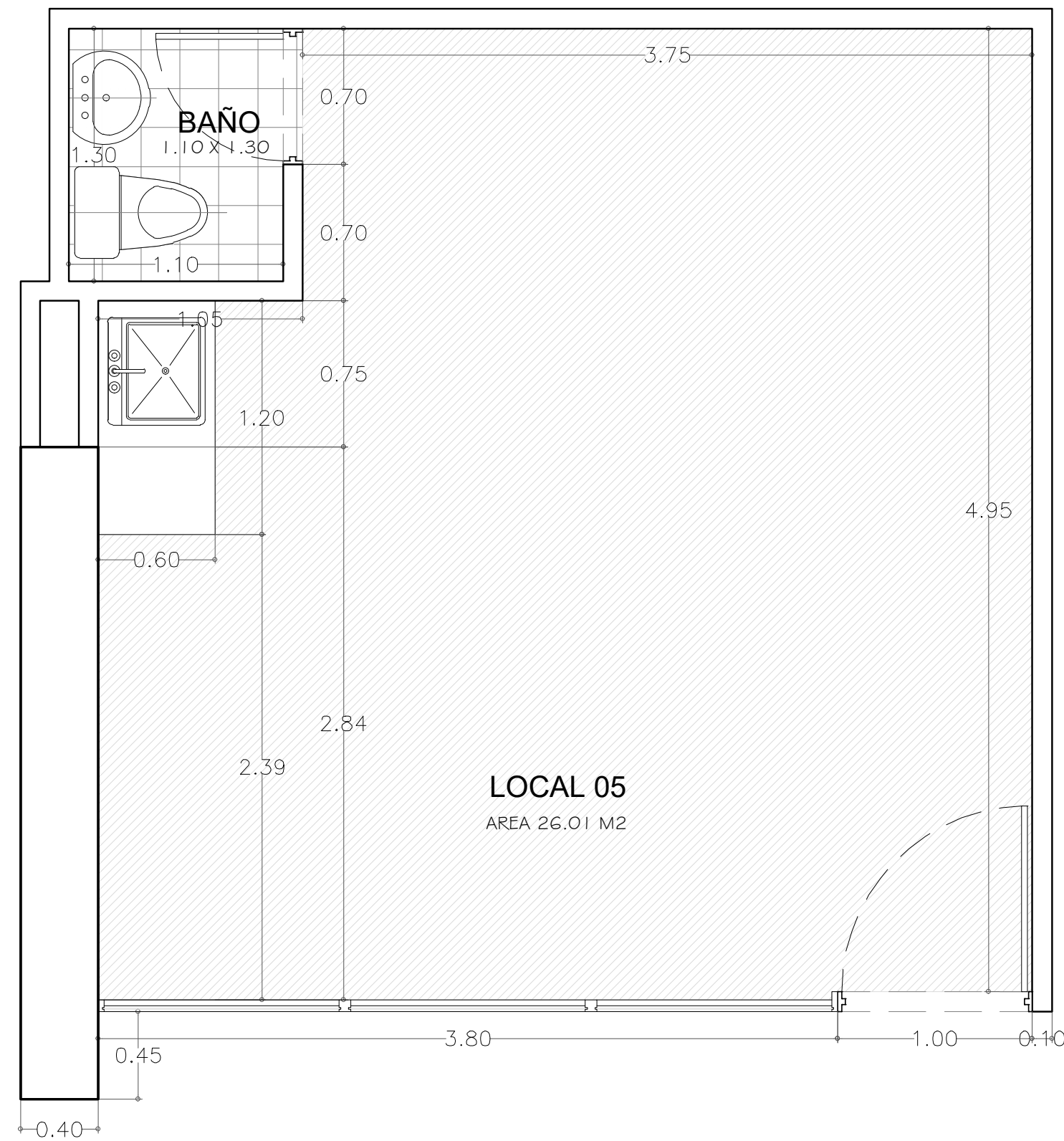
# LOCAL 4



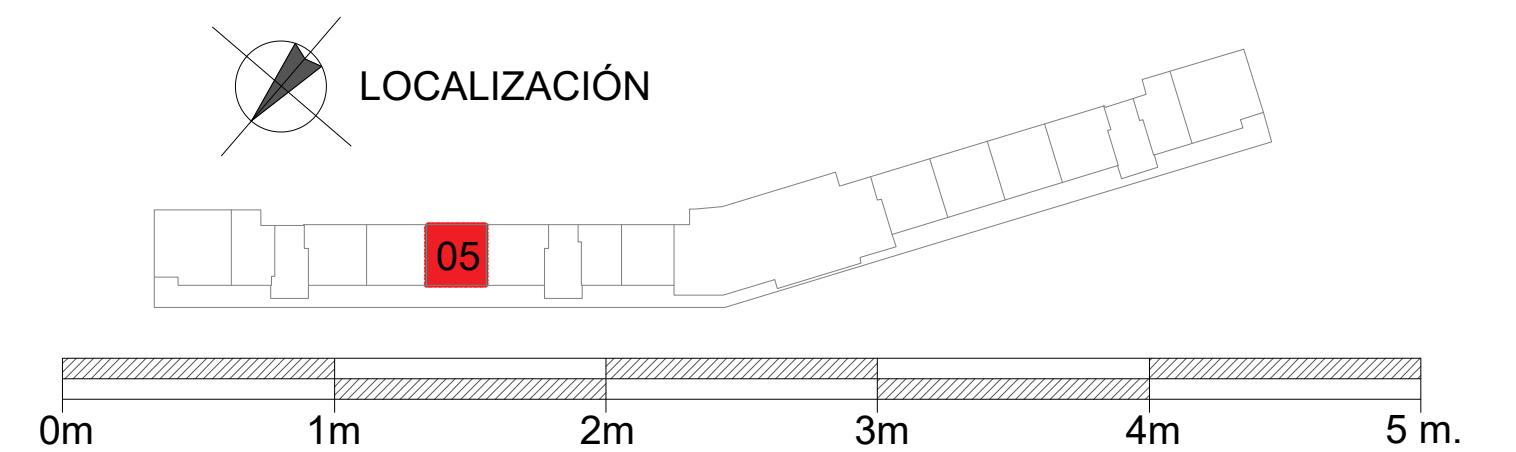
ÁREAS CONSTRUIDAS  
**\*26,01m<sup>2</sup>**  
Área privada: 24,86 m<sup>2</sup>



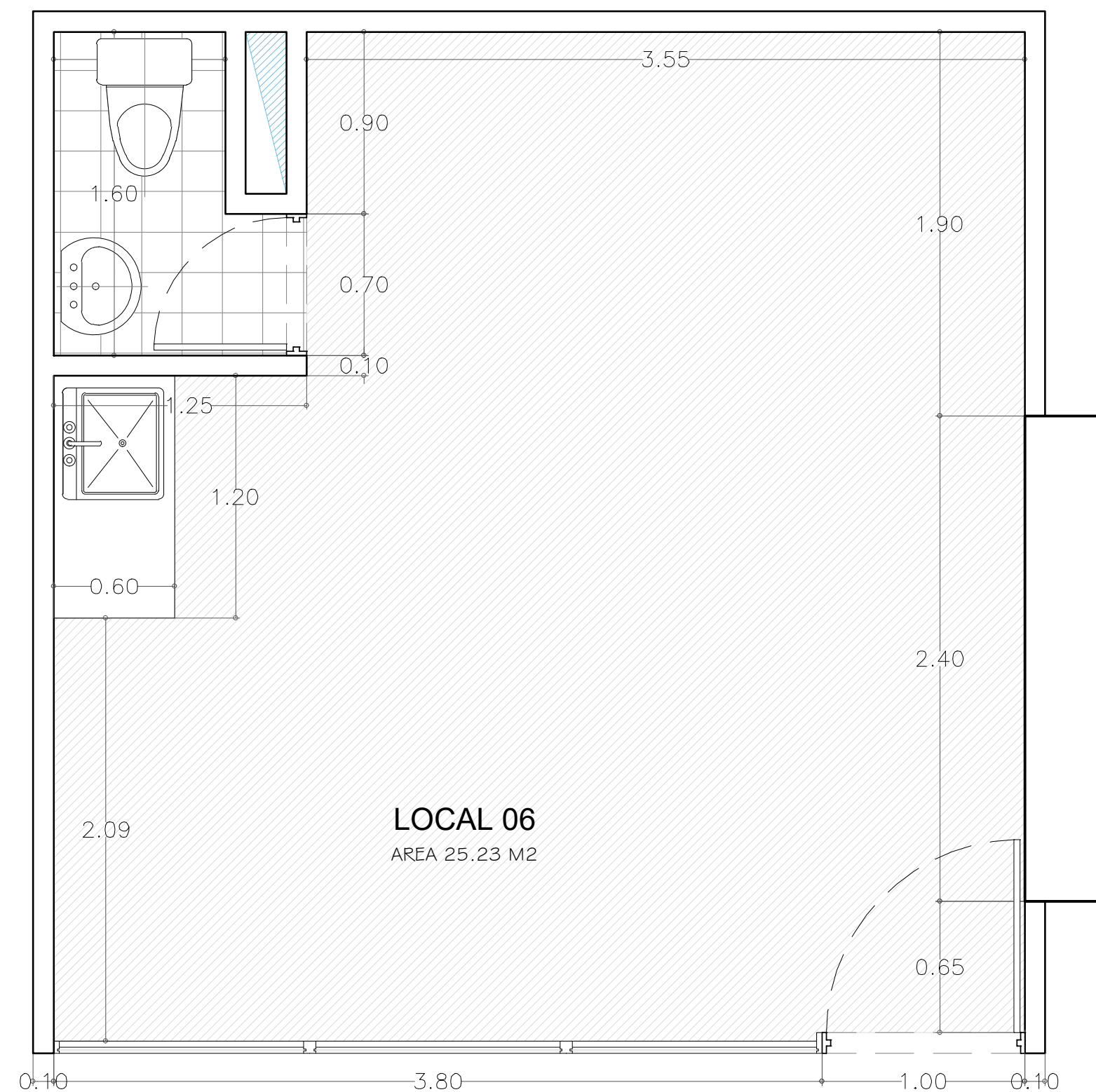
# LOCAL 5



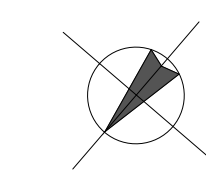
ÁREAS CONSTRUIDAS  
**\*26,01m<sup>2</sup>**  
Área privada: 24,86 m<sup>2</sup>



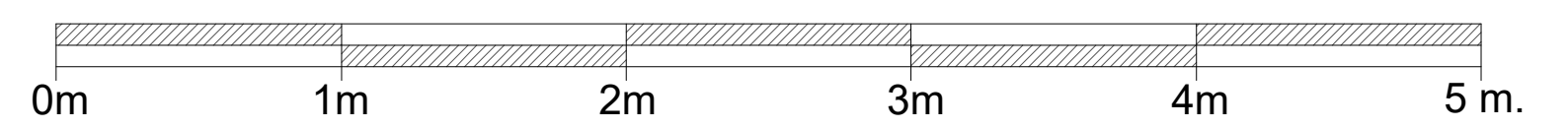
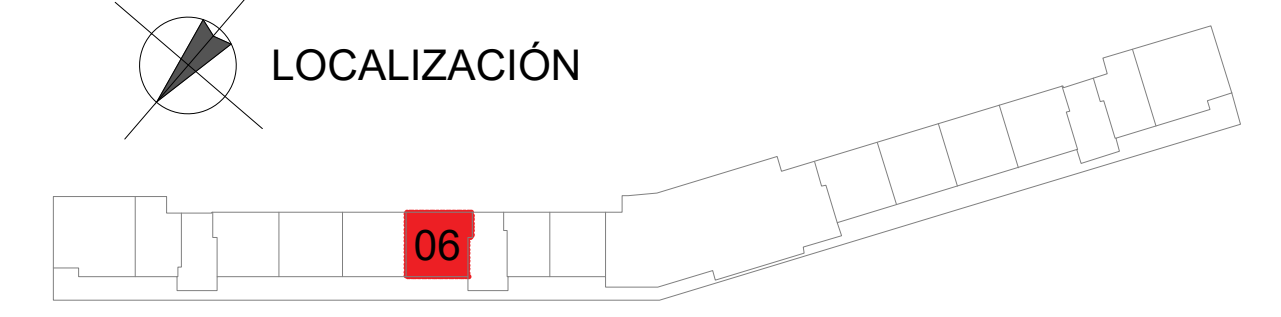
# LOCAL 6



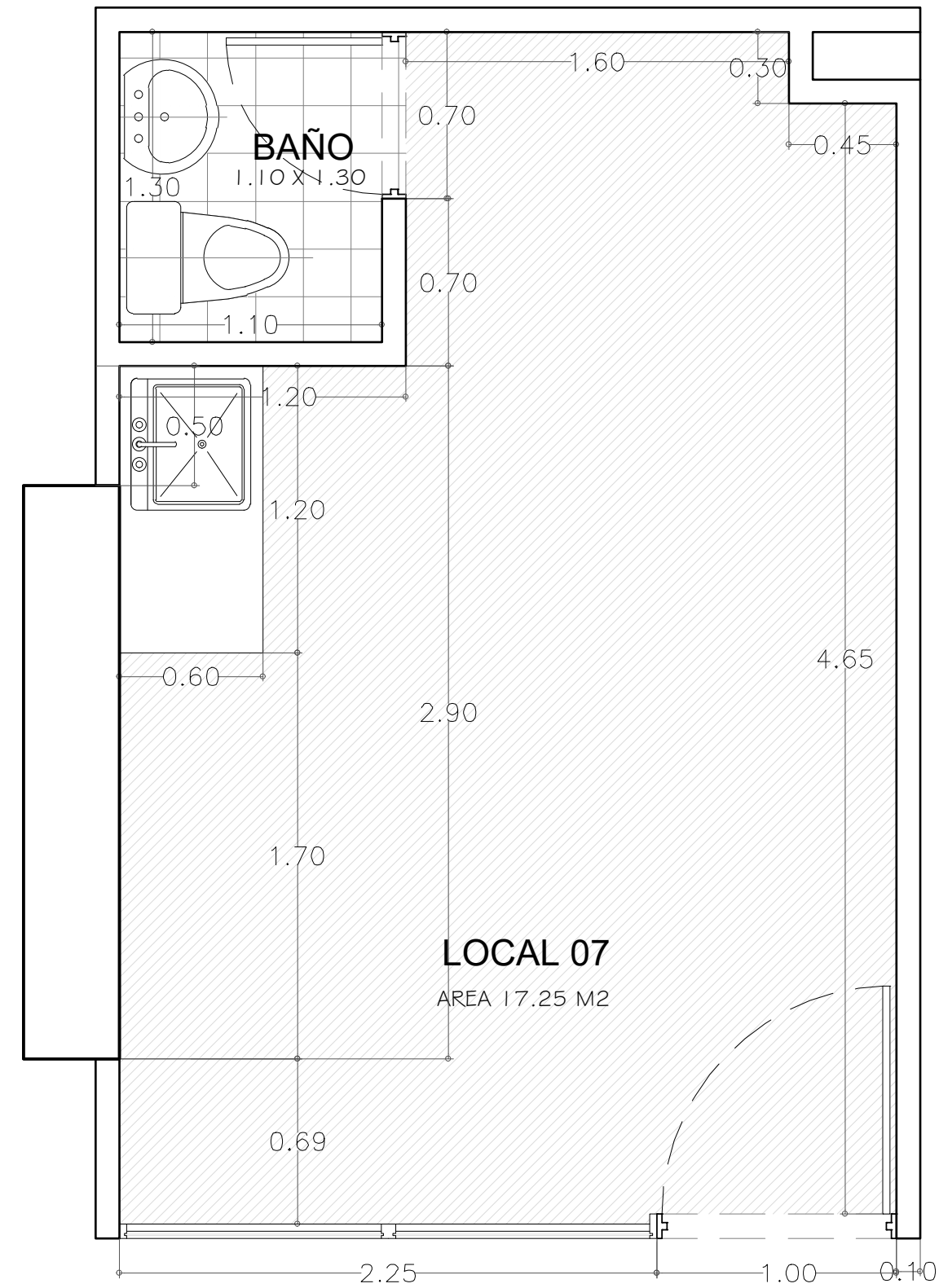
ÁREAS CONSTRUIDAS  
**\*25,23m<sup>2</sup>**  
Área privada: 24,46 m2



LOCALIZACIÓN

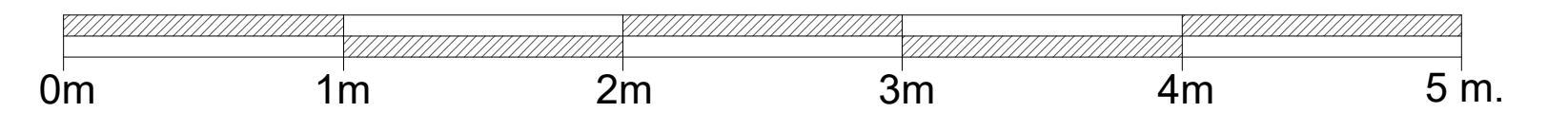
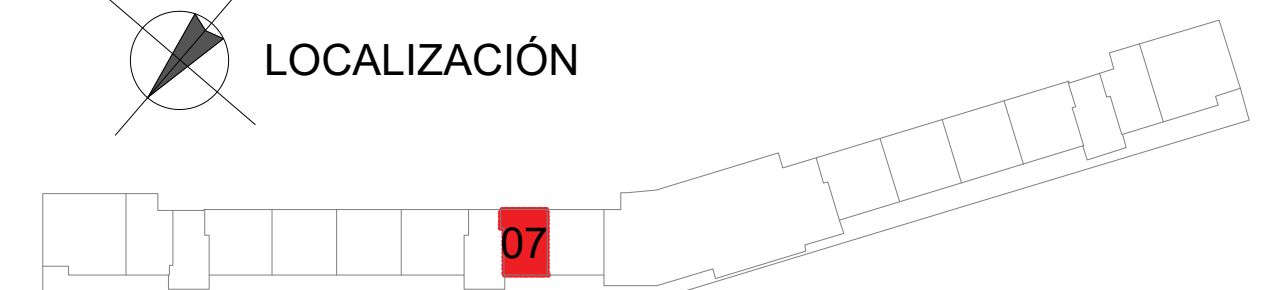


# LOCAL 7

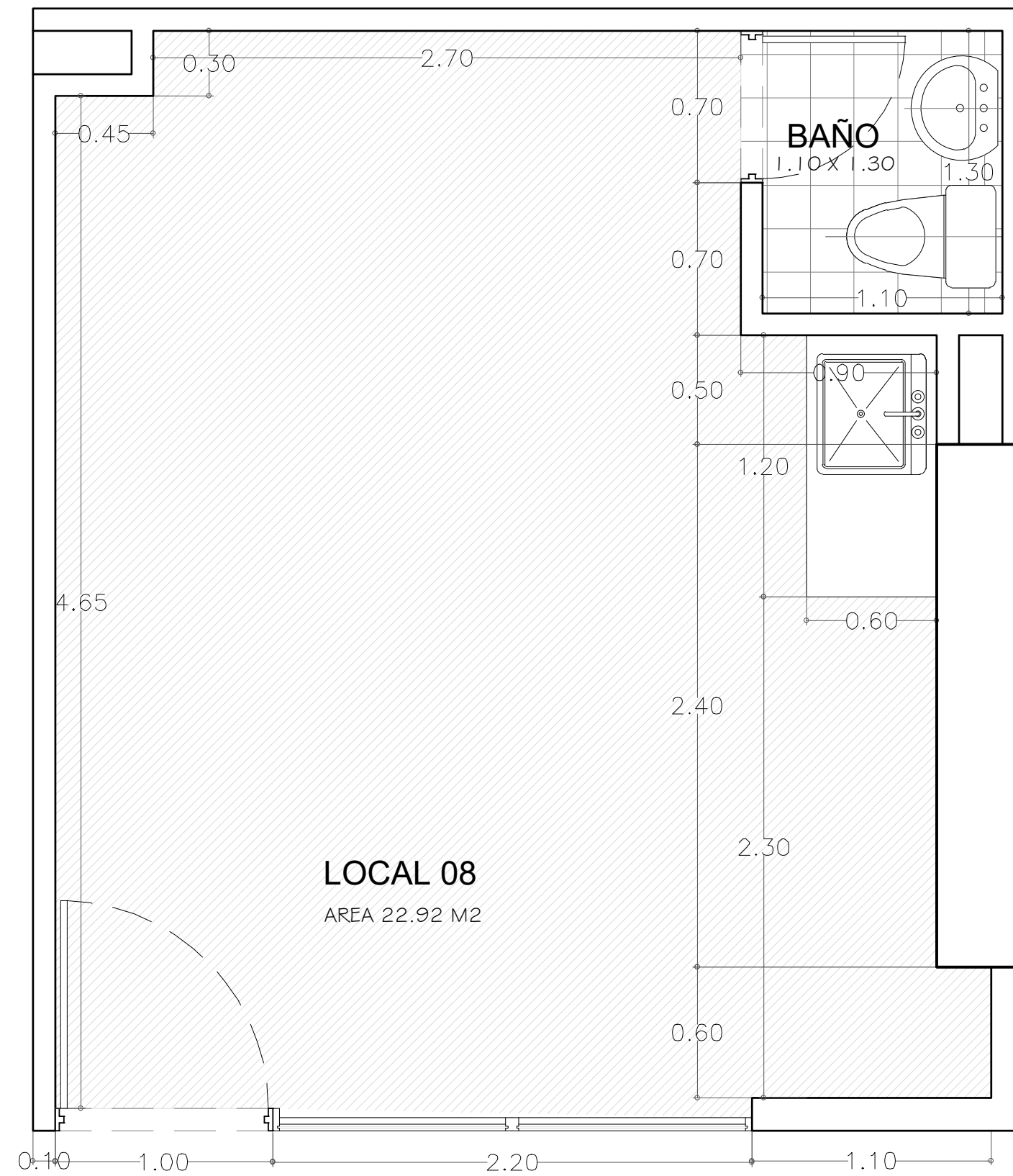


ÁREAS CONSTRUIDAS  
**\*17,25 m<sup>2</sup>**  
Área privada: 16,71 m<sup>2</sup>

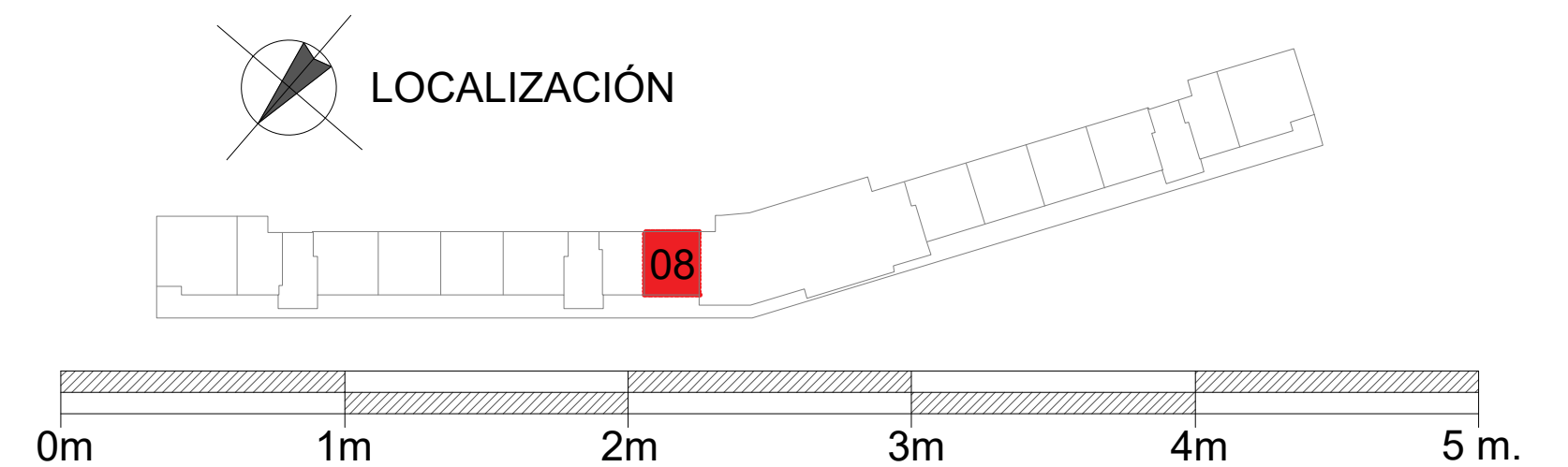
LOCALIZACIÓN



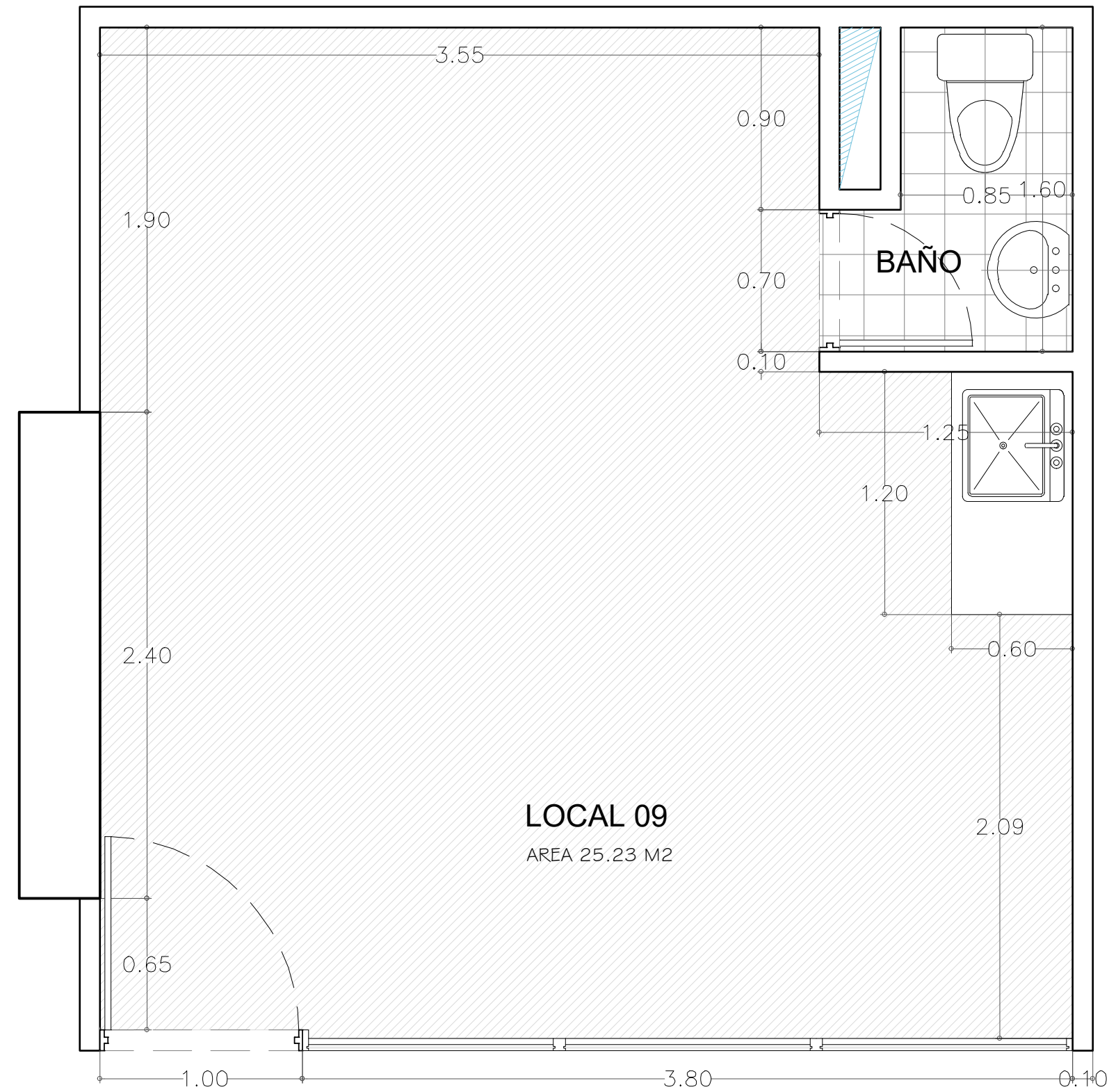
# LOCAL 8



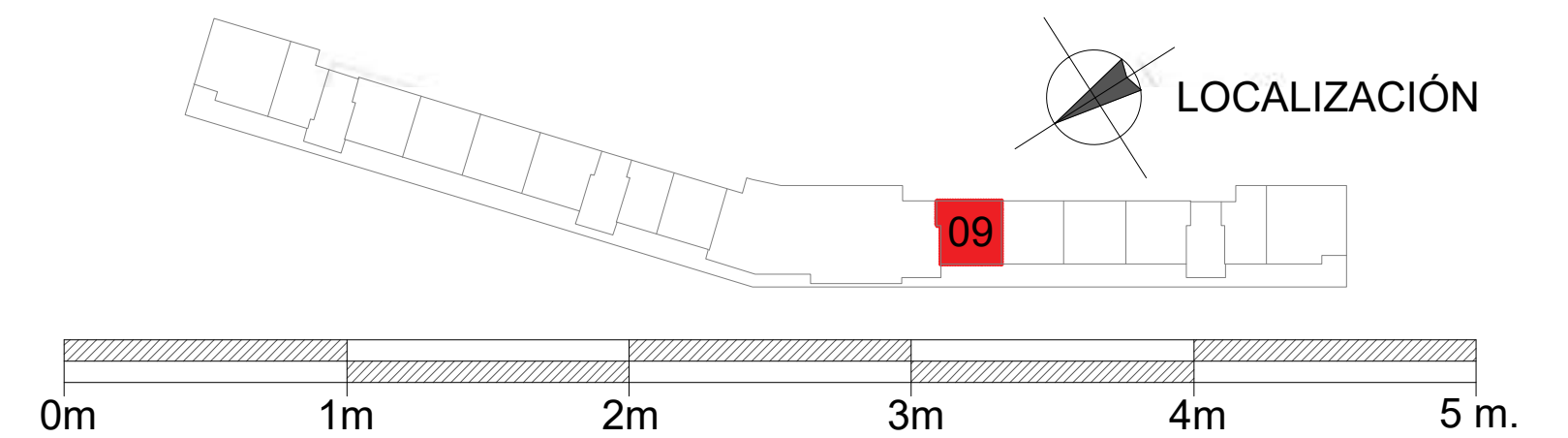
ÁREAS CONSTRUIDAS  
**\*22,92 m<sup>2</sup>**  
Área privada: 21,55 m<sup>2</sup>



# LOCAL 9

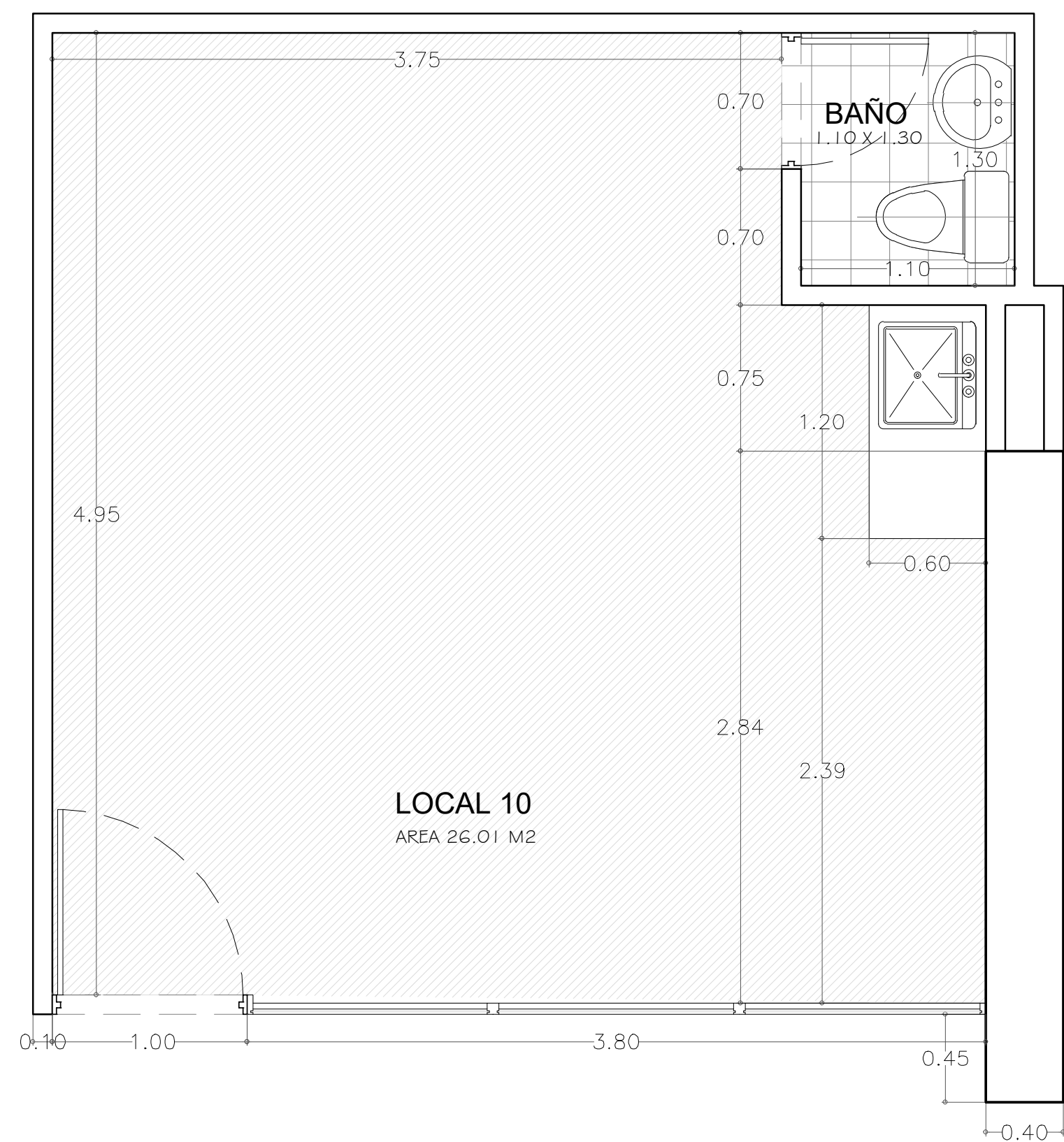


ÁREAS CONSTRUIDAS  
**\*25,23 m<sup>2</sup>**  
Área privada: 24,46m<sup>2</sup>

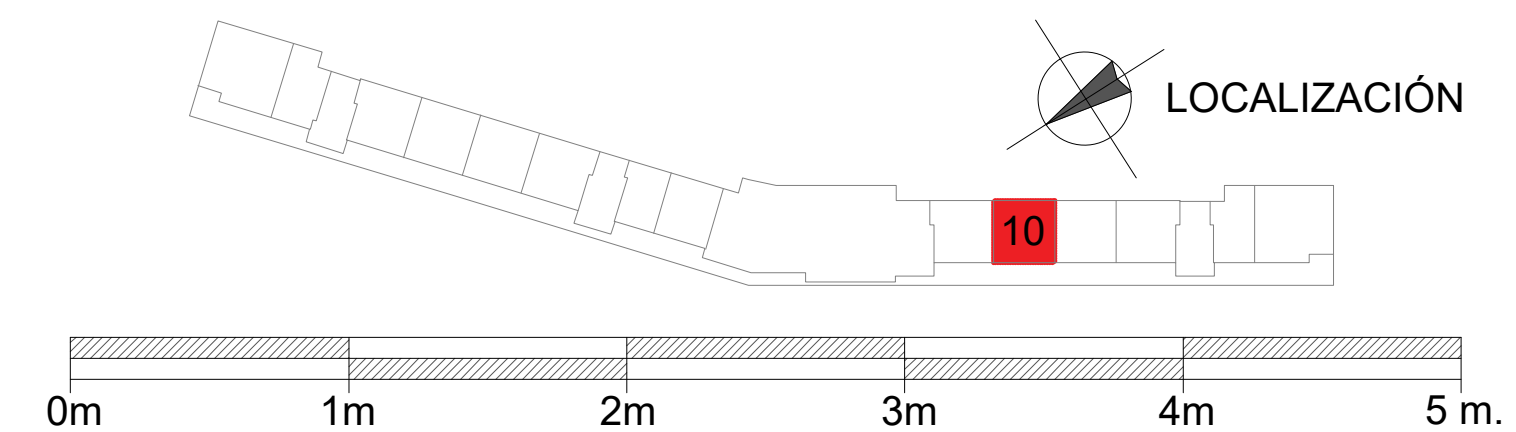




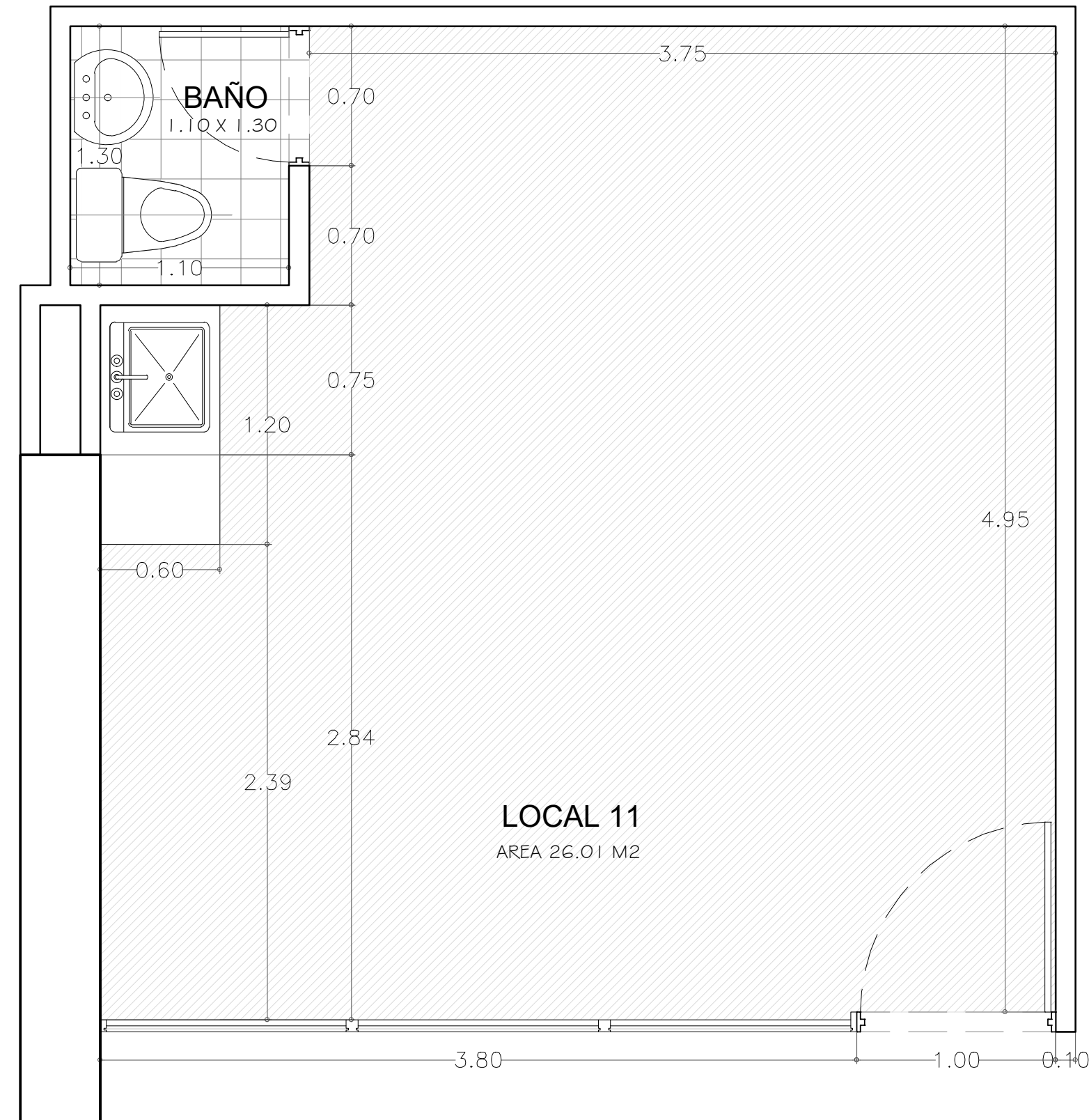
# LOCAL 10



ÁREAS CONSTRUIDAS  
**\*26,01 m<sup>2</sup>**  
Área privada: 24,86 m<sup>2</sup>



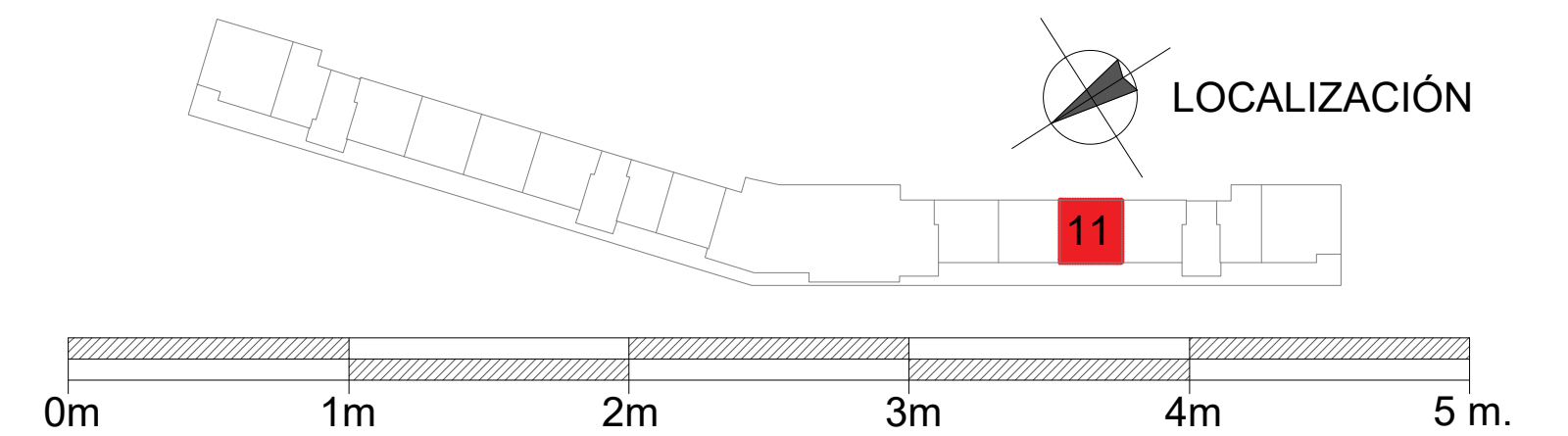
# LOCAL 11



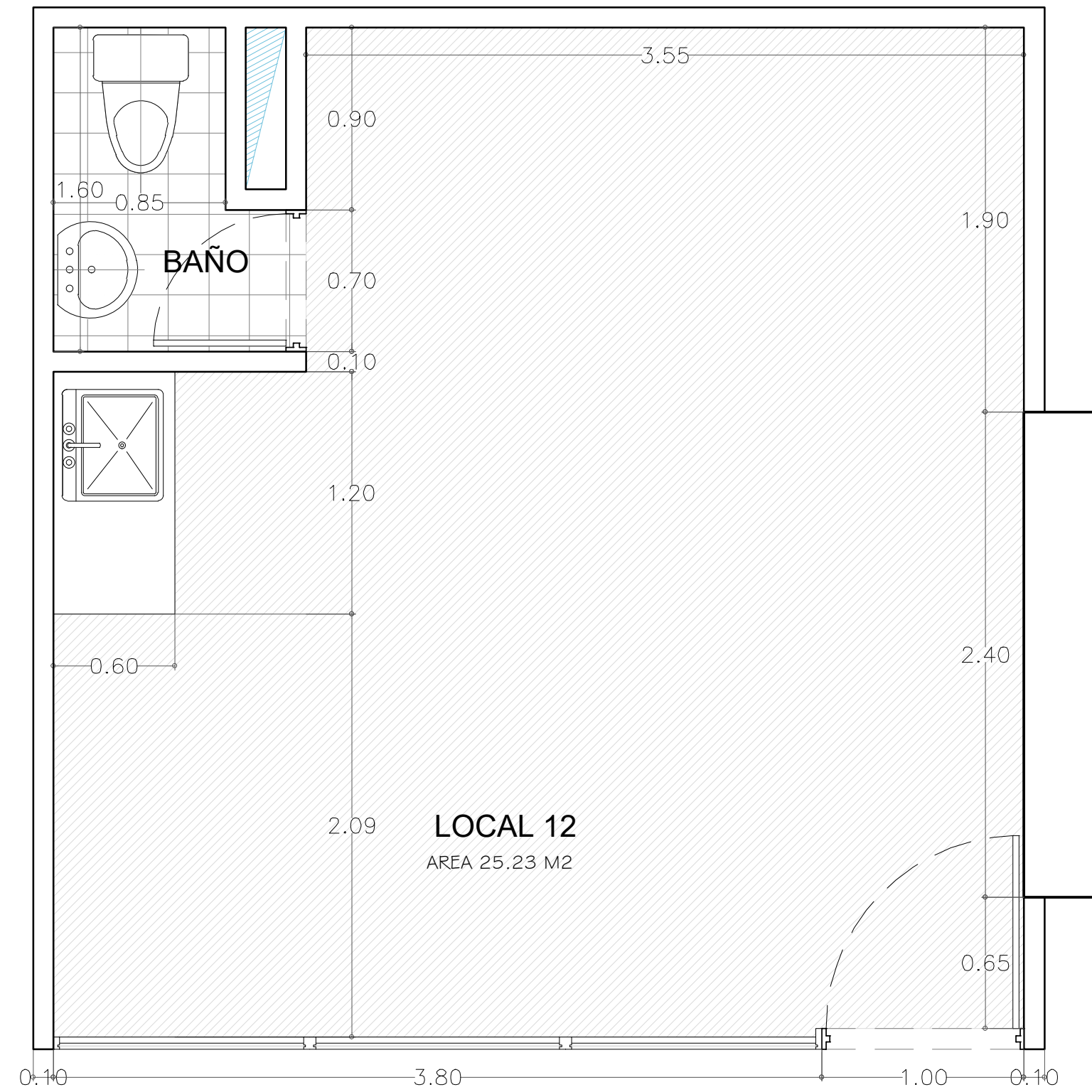
ÁREAS CONSTRUIDAS

**\*26,01m<sup>2</sup>**

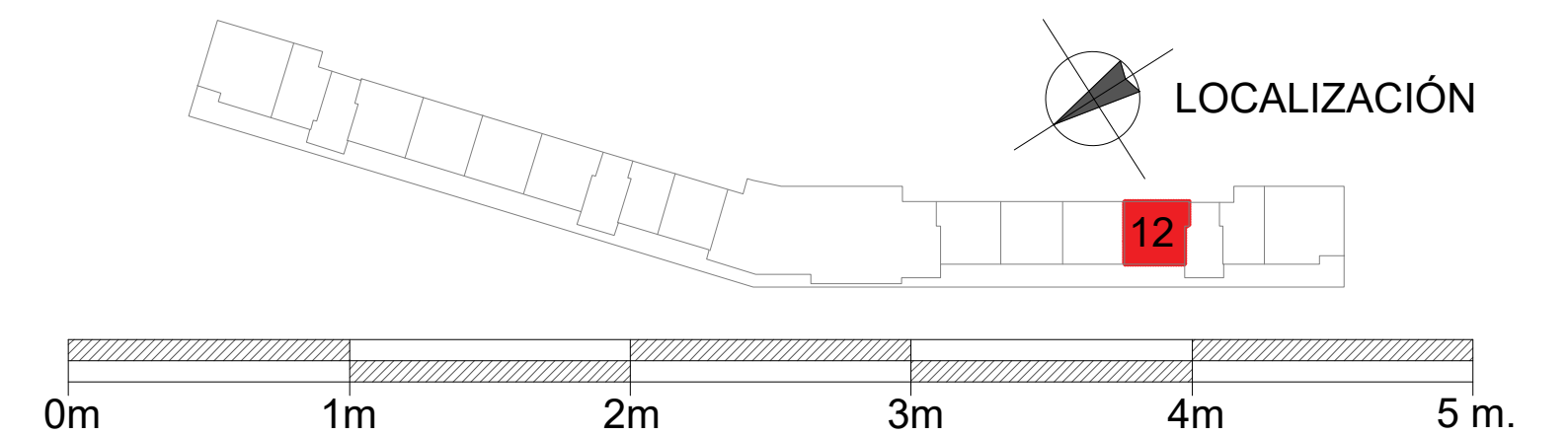
Área privada: 24,86 m2



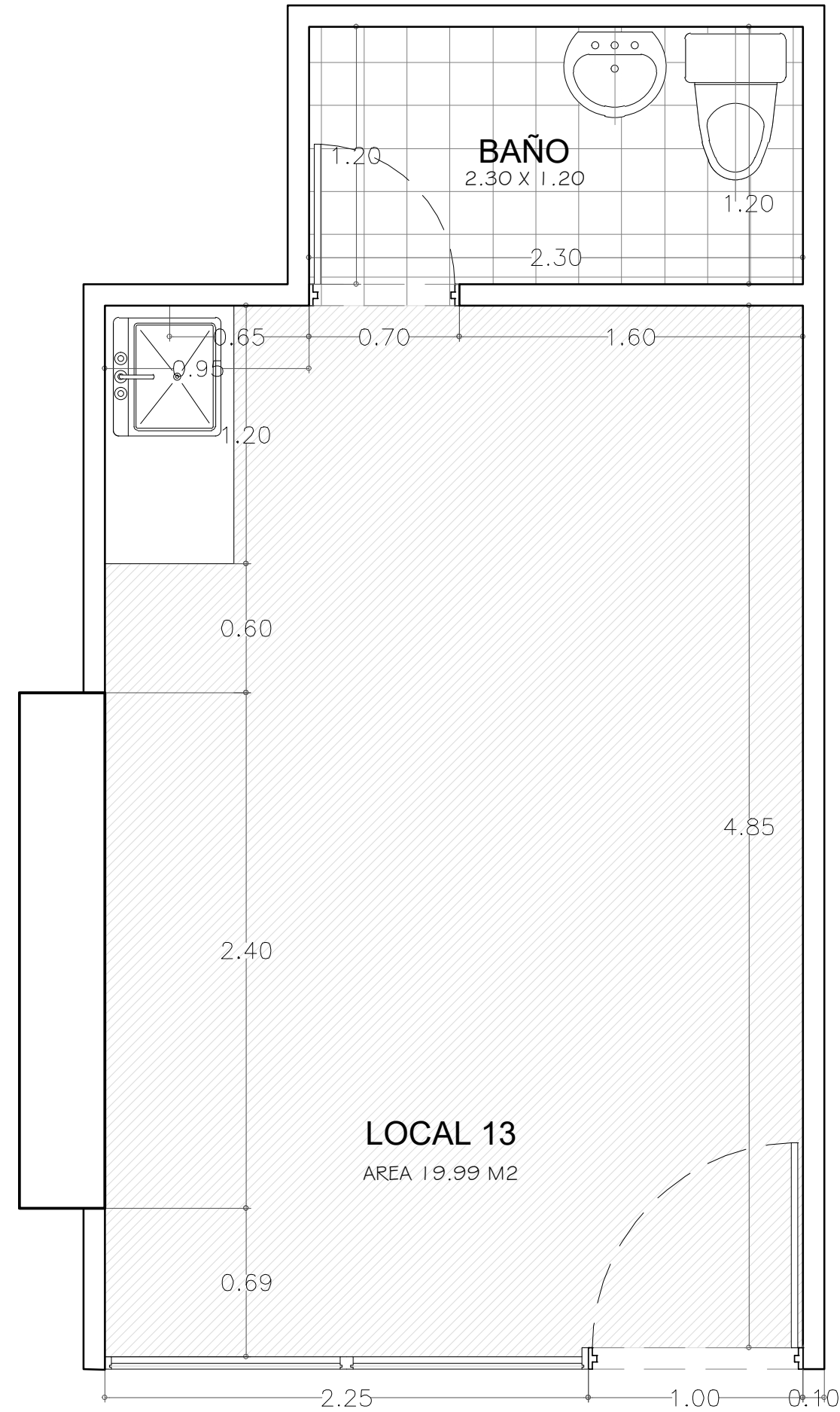
# LOCAL 12



ÁREAS CONSTRUIDAS  
**\*25,23 m<sup>2</sup>**  
Área privada: 24,46 m<sup>2</sup>



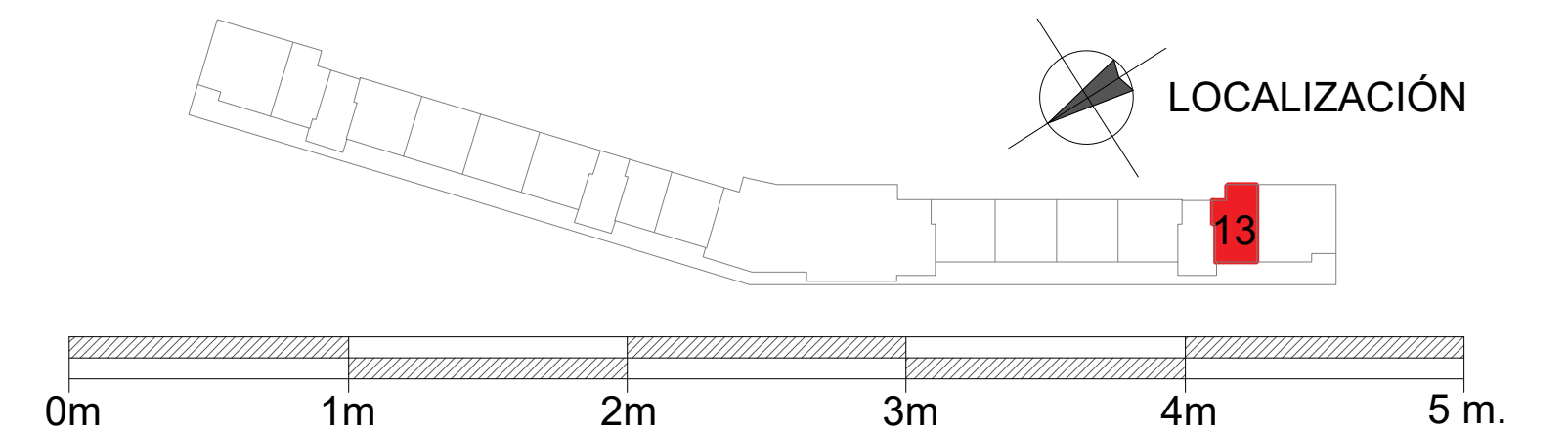
# LOCAL 13



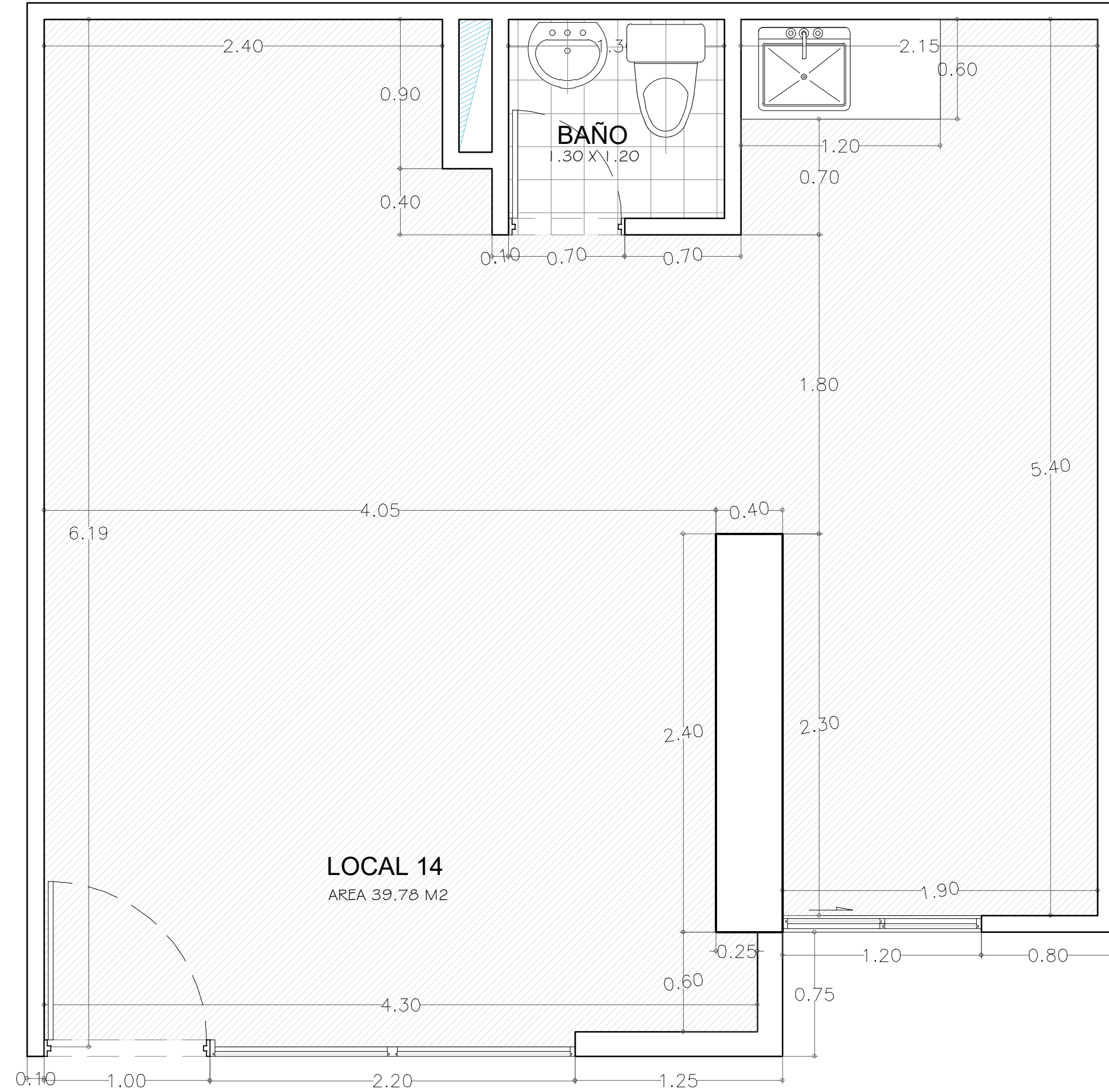
ÁREAS CONSTRUIDAS

**\*19,99 m<sup>2</sup>**

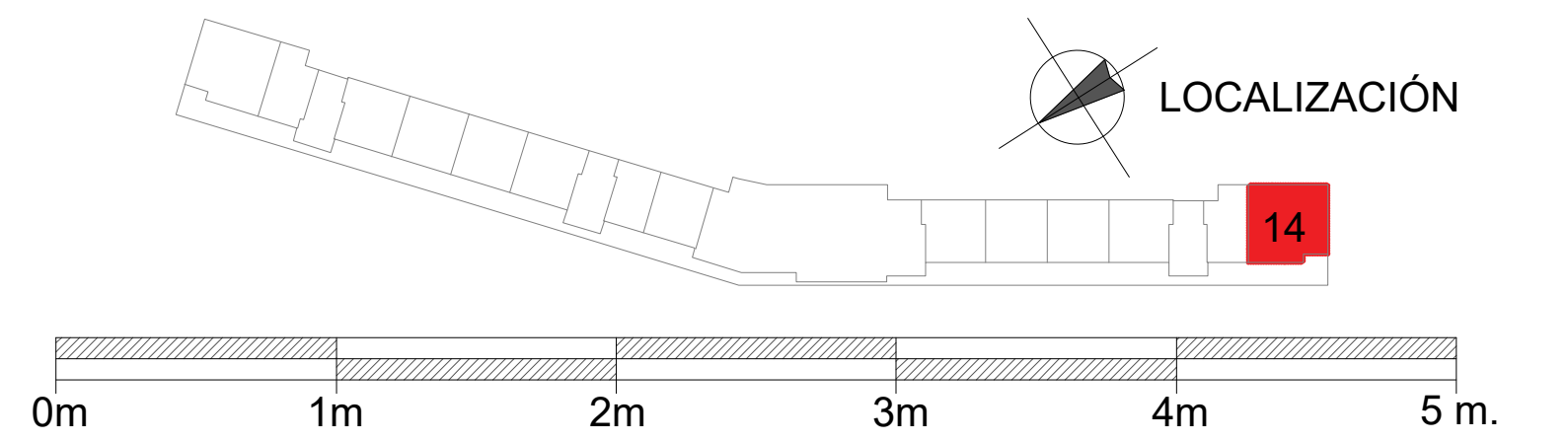
Área privada: 19,58 m<sup>2</sup>



# LOCAL 14



ÁREAS CONSTRUIDAS  
**\*39,78m<sup>2</sup>**  
Área privada: 37,70m<sup>2</sup>







**¿Quieres saber más?**  
Para recibir información adicional,  
**¡contáctanos!**



322 41 77



318 543 9501



[pinares@centrosur.co](mailto:pinares@centrosur.co)



[www.centrosur.co](http://www.centrosur.co)